

*Vermilion Parish  
Office of Homeland Security &  
Emergency Preparedness*



---

MULTI-HAZARD  
EMERGENCY OPERATIONS PLAN

**ANNEX T**  
**TERRORISM**

June 2019

## CONTENTS

Contents .....	2
I. PURPOSE .....	1
II. SITUATION AND ASSUMPTIONS.....	1
A. Situation .....	1
B. Assumption.....	2
III. CONCEPT OF OPERATIONS .....	2
A. Prevention .....	2
B. Mitigation .....	3
C. Preparedness.....	3
D. Response.....	3
E. Recovery .....	5
IV. ORGANIZATION AND ASSIGNMENT OF RESPONSIBILITIES .....	5
A. Vermilion Parish Police Jury President.....	5
B. Vermilion Parish Sheriff.....	5
C. Municipal Police Departments .....	6
D. Office of Homeland Security & Emergency Preparedness .....	6
E. Fire Services.....	6
F. Medical Services .....	6
G. The Louisiana Office of Public Health .....	7
V. DIRECTION AND CONTROL.....	7
A. Crisis Management and Consequence Management .....	7
VI. CONTINUITY OF GOVERNMENT .....	7
VII. ADMINISTRATION AND LOGISTICS .....	7
VIII. PLAN DEVELOPMENT AND MAINTENANCE.....	8
IX. AUTHORITIES AND REFERENCES .....	8
X. APPENDICIES TO THIS ANNEX .....	8

---

# ANNEX T - TERRORISM

## I. PURPOSE

*This section describes the methods and procedures to be followed to conduct basic prevention and protection activities.*

The purpose of this annex is to provide a framework for the coordination of Parish, local, and outside resources in dealing with a terrorist incident. Vermilion Parish authorities will endeavor to control and minimize potential effects of such incidents on the public, while acquiring and preserving the information needed to bring the terrorist(s) to justice.

This annex establishes operational concepts and serves to clarify roles and responsibilities so as to lessen the possible confusion resulting from a threat of terrorism or an actual event, through coordinated integration and joint operations in accordance with comprehensive Federal, State and local government emergency operation and related contingency plans.

## II. SITUATION AND ASSUMPTIONS

### A. SITUATION

1. Terrorist Incident is defined as: "A violent act, or an act dangerous to human life, in violation of the criminal laws of the United States, or of any State, to intimidate or coerce a government, the civilian population, or any segment thereof, in furtherance of political or social objectives." Acts of terrorism can occur with or without warning.
2. Federal law dictates that all acts of terrorism, planned or executed, are subject to Federal jurisdiction.
3. Federal law assigns the primary authority to the Federal Government for prevention of and response to acts of terrorism; State and local governments provide assistance as required.
4. Vermilion Parish, though having rural landscape, has high visibility and is a high vulnerability target for terrorists (i.e. symbolic structures, such as government buildings, public works, such as roads, bridges, and drainage and flood control structures, utilities, industrial installations that have hazardous materials, transportation installations and vehicles, and periodic gatherings of large numbers of people.

(See Appendix 1)

5. Since a terrorist(s) can choose his targets and the time and method of his attack(s), advance knowledge of such attacks if available will be disseminated through law enforcement channels, and information will be handled with care so that it is protected and remains secure.
6. A terrorist(s) will choose targets in order to satisfy his own motives and time schedules. A frequent motive for terrorist action is to attract the attention of the news media by committing a crime that is outrageous, either by the target that is

attacked, or by the number of deaths, injuries, and damages inflicted. The posture of the government must, therefore, be loose and flexible.

7. The confirmed presence of an explosive device or weapon of mass destruction capable of causing a significant destructive event prior to actual injury or property is considered as a "Significant Threat".
8. Vermilion Parish and its municipalities have a limited number of law enforcement and public safety personnel. It is not possible to guard all the buildings, installations, and crowds that might become terrorist targets.
9. The Office of Homeland Security and Emergency Preparedness will provide to Federal, State and Local, Emergency Managers and Law Enforcement Agencies, information concerning threats on a National, Regional and Local basis.

#### B. ASSUMPTION

1. Acts of terrorism may involve bombings, shootings, arson, weapons of mass destruction, nuclear, chemical and/or biological contamination, kidnapping and/or hostage-taking, sabotage, cyber-attack/threats and other causes.
2. Advance information or intelligence may not be immediately available to emergency responders. Any such information may be kept in law enforcement channels for security reasons.
3. If any intelligence information is given to the emergency preparedness community, it will probably only be released at the last possible moment, and the warning information may not be specific or reliable.
4. The need for security for intelligence information may hinder attempts to preposition emergency response agencies or to give timely warning to people in the targeted area. This will result in a situation like that during a tornado, of little or no advance warning, followed by sudden devastation. The potential for casualties in such a situation will be high.
5. When a terrorist incident has taken place, there will be a need to rescue injured people, recover bodies, demolish unsafe structures, and preserve the crime scene elements that will be needed to trace the terrorist(s) and /or construct a chain of evidence of the terrorist(s)' trial. These needs may conflict. When they do conflict, the grounds of the conflict will be explained and referred to higher authority. In the case of a conflict among Parish and Local authorities, the conflict will be referred to the Vermilion Parish Police Jury President. In case of a conflict among Parish and State or Federal authorities, the conflict will be referred to the Governor.

### III. CONCEPT OF OPERATIONS

Terrorist incident preparations and operations of Vermilion Parish will take place within these five phases: Prevention, Mitigation, Preparedness, Response, and Recovery.

#### A. PREVENTION

1. Research training available for terrorism.

2. Survey emergency responders to find out the type of training they require.

## B. MITIGATION

1. GOHSEP, the Louisiana State Police (LSP), and other concerned agencies will coordinate continuing educational programs for government business and concerned citizens to enhance awareness.
2. Vermilion Parish will coordinate training for emergency responders, appointed and elected officials, health care professionals, hospitals, and individuals in key positions, i.e., schools, utility companies, communications, and transportation.
3. Vermilion Parish will circulate public information materials to the community.
4. State and local law enforcement agencies will continue to share information and intelligence concerning possible or potential terrorist attacks to eliminate the threat or to minimize the impact on the community.

## C. PREPAREDNESS

1. This plan, its implementing procedures, and other related directives, papers, and documents will be maintained, reviewed, and updated, as needed. All such papers will use the concept of the Incident Command System for responding to terrorist incidents.
2. Vermilion Parish will initiate and maintain such memoranda of agreement as are needed to insure close cooperation with other concerned jurisdictions, organizations, and parties.
3. The Parish will ensure that Terrorism Planning materials and concepts are included in the regular emergency preparedness training and exercise schedule.
4. Vermilion Parish will ensure that procedures exist to direct any advance knowledge of terrorist incidents to law enforcement channels in order that actions may be taken to prevent the incidents and apprehend the terrorist(s). Such information will be safeguarded to insure that it does not leak out and alert the terrorist(s) before they can be apprehended.
5. Vermilion Parish will ensure that chains of communication are opened and kept open among local, Parish, and State law enforcement authorities to insure that information is handled expeditiously and securely.
6. In cases in which advance information is received by authorities, every effort will be made to preposition public safety and emergency response people and equipment so as to render effective aid as soon as possible to the event.

## D. RESPONSE

1. If advance warning is received, some response agencies may be able to pre-stage people and equipment and reduce the overall response time.
2. All response activities will be conducted according to the Incident Command System.

3. When the potential or actual impact of the incident is great, or the threat is great, the Parish Police Jury President may declare a State of Emergency and mobilize all Parish resources to deal with the threat.
4. If the threat is too great to be handled by Vermilion Parish resources, the State will be requested to support the operations via the WebEOC portal.
5. The initial response may begin without knowing terrorists are involved.
6. This annex will be implemented only whenever there is consideration or evidence that a threat of, or actual occurrence of, a terrorist incident has taken place.
7. Vermilion Parish will establish an on-scene incident command center to conduct operations. Law enforcement authorities will establish a Emergency Operations Center (EOC) at which all crime scene activities will be coordinated. The two centers may be located together. The Incident Command System (ICS) will be used to manage all on-scene activities.
8. The Parish Sheriff Office or Municipal Police Chief will determine if an incident is a terrorism event.
9. The Vermilion Parish EOC should be activated immediately if the threat or actual emergency is serious enough to declare a local state of emergency or the Department of Homeland Security has issued a Severe or Red Terrorist Threat Level for either the nation with a credible threat in Louisiana or a Severe or Red Terrorist Threat Level directly for Vermilion Parish or adjacent parishes.
10. The New Orleans Office of the Federal Bureau of Investigation (FBI), weapons of mass destruction coordinator's office should be contacted upon creditable threats by the Vermilion Sheriff's Office or through the Louisiana State Police as requested by the Vermilion Sheriff's Office.
11. Law Enforcement from either the Sheriff's Office or local police department will establish a Law Enforcement Operations Center at which all Crisis Management and Consequence Management activities will be coordinated. The two centers may be located together. A Parish representative will be sent to the Law Enforcement Operations Center, and a Law Enforcement representative will be sent to the Parish EOC, to insure that operations are coordinated.
12. The Vermilion Parish Sheriff's Office will be responsible for requesting additional law enforcement resources through OHSEP through WebEOC.
13. The Vermilion Parish Fire Departments will provide urban search and rescue, and other duties as assigned by Annex I and requested by law enforcement authorities. Hazardous materials decontamination will be requested through WebEOC if needed.
14. In the event of a bio-terrorism incident, Governor's Office of Homeland Security and Emergency Preparedness, through the Office of Public Health will distribute appropriate medications as directed through local pharmacist. Medications may be provided through the Strategic National Stockpile.
15. Vermilion Parish may be responsible for providing distribution points for the Strategic National Stockpile. A Memorandum of Agreement has been entered into between the Vermilion Parish School Board and the Louisiana Office of Public Health.

16. Health and Medical Response will be initiated by Acadian Ambulance and supplemented by local first responders and EMT's from the Fire Service. (See Annex O Health and Medical)

#### E. RECOVERY

Recovery, as used in this annex, will mean the return of all operations to normal. Recovery operations will be conducted in accordance with the provisions of the Vermilion Parish Emergency Operations Plan and the Louisiana Disaster Recovery Manual.

Recovery activities may include but are not limited to:

1. Critical Incident Stress counseling for victims and responders.
2. Victim relocation or long term sheltering
3. Site cleanup and debris removal
4. Site and equipment decontamination
5. Site/building safety inspections
6. A quarantine period (biological attack)

### IV. ORGANIZATION AND ASSIGNMENT OF RESPONSIBILITIES

Local departments, agencies, and organizations will utilize all annexes of the emergency operations plan to address problems and provide assistance to the State and/or the Federal governments, as necessary.

#### A. VERMILION PARISH POLICE JURY PRESIDENT

1. Issue an Emergency Declaration as appropriate, and request assistance from the State as needed via WebEOC.
2. Direct response and recovery activities.
3. Assist with consequence management through the Office of Homeland Security and Emergency Preparedness.

#### B. VERMILION PARISH SHERIFF

1. Control and coordinate all law enforcement activities in the Parish. Develop and maintain procedures to support this plan including procedures for getting, processing, and safeguarding information.
2. Maintain continuing liaison with other law enforcement authorities in the Parish and in neighboring parishes, and with the Louisiana State Police (LSP). Maintain liaison with the Federal Bureau of Investigation (FBI) and other federal law enforcement authorities who have offices in the Parish.
3. When a suspected terrorist incident takes place, carry out all activities such as securing of a perimeter around the site and having the area searched for possible secondary explosive devices that might have been placed to target responders. If law enforcement personnel are first on the scene, proceed with lifesaving activities,

including search and rescue, and evacuation. Coordinate activities with fire service, medical, and other emergency preparedness response agencies and personnel.

4. Prevent debris clearance until debris has been examined for possible evidence of a crime, except where debris clearance is immediately necessary for rescue operations. Establish a Law Enforcement Operations Center at the scene, and prepare for the possible establishment of a Federal Joint Operations Center.
5. When a suspected terrorist incident takes place, call in the LSP and the FBI and maintain primary Parish contact with them in carrying out all activities.
6. Coordinate and maintain communication with State Fusion Centers for all classified information.

#### C. MUNICIPAL POLICE DEPARTMENTS

1. Coordinate law enforcement activities with the Sheriff's Office.
2. Refer to the Basic Plan and Annex "G".

#### D. OFFICE OF HOMELAND SECURITY & EMERGENCY PREPAREDNESS

1. Coordinate all Parish activities that are not associated with law enforcement aspects of the incident.
2. Advise the Parish Police Jury President on response and recovery issues.
3. Activate the EOC and set up an on-scene command post, if needed, to assist the incident commander.
4. Coordinate requests for assistance from neighboring jurisdictions and the State.
5. Coordinate with State, Regional and Federal responders, if needed.

#### E. FIRE SERVICES

1. Conduct search and rescue.
2. Fire suppression.
3. Other activities, as needed.
4. Check for the presence of hazardous materials and take appropriate measures. In cases in which fire personnel have explosives training and expertise, deal with any unexploded devices.

#### F. MEDICAL SERVICES

1. Emergency medical personnel will conduct lifesaving operations as appropriate.
2. Ensure that casualties of explosions and hazardous materials incidents are decontaminated as soon as possible.
3. Public Health and other health authorities will investigate and conduct tests for chemical and biological contamination, and insure that proper precautions are taken to render contaminated areas harmless.



4. Hospitals and other health services will insure that people who have been exposed to chemical or biological agents are decontaminated.
5. In a biological or chemical agent release, Public Health will identify the exposed persons, prevent secondary transmissions, and assist with prophylactic treatment.

#### G. THE LOUISIANA OFFICE OF PUBLIC HEALTH

1. Provide technical support to responders for bio-terrorism emergencies.
2. Coordinate large-scale vaccination efforts.
3. Provide for the distribution of medications provided through the Strategic Stockpile.

### V. DIRECTION AND CONTROL

#### A. CRISIS MANAGEMENT AND CONSEQUENCE MANAGEMENT

1. All law enforcement and Crisis Management Component operations will be controlled and coordinated by the Sheriff's office.
2. Consequence Management will be the ultimate authority of the Sheriff's Office, but coordinated through the Emergency Operation Center.
3. CRIMCO

All law enforcement and **CRIMCO** operations will be controlled and coordinated by the Vermillion Parish Sheriff's Office.

#### 4. COMCO

All normal emergency preparedness, response, and recovery **COMCO** activities will be controlled and coordinated in accordance with the Vermillion Parish Emergency Operations Plan, and Annex A.

### VI. CONTINUITY OF GOVERNMENT

See Basic Plan.

### VII. ADMINISTRATION AND LOGISTICS

1. The Emergency Operations Center (EOC) is the control point for Law Enforcement operations. It will be set up and staffed by the Sheriff's Office. It may be absorbed by a Joint Operations Center (JOC) if one is set up by federal authorities.
2. The Parish EOC is the control point for operations, as described in the Basic Plan. It will continue to function as long as operations are conducted.
3. An on-scene Command Post will be set up for the Incident Commander. It will function as long as it is needed.
4. All necessary records and reports will be maintained on each incident, for both the CRIMCO and COMCO operations.
5. The Emergency Operations Center (EOC) and the State Fusion Center (LA-SAFE) will disseminate critical information via fax, email, 700/800 MHZ Radios, and secure landline communication networks.

## VIII. PLAN DEVELOPMENT AND MAINTENANCE

1. The OHSEP Director is responsible for maintaining and updating this annex. The Director will develop, coordinate, and maintain Standard Operating Guidelines (SOG's) and Mutual Aid Agreements to support the plan.
2. The Sheriff is responsible for developing, coordinating, and maintaining all procedures and Mutual Aid Agreements needed to support this annex.

## IX. AUTHORITIES AND REFERENCES

1. The Governor's Office of Homeland Security and Emergency Preparedness Emergency Operations Plan
2. The Louisiana Disaster Recovery Manual
3. The Federal Response Plan, Terrorist Incident Annex
4. The Vermilion Parish Basic Plan

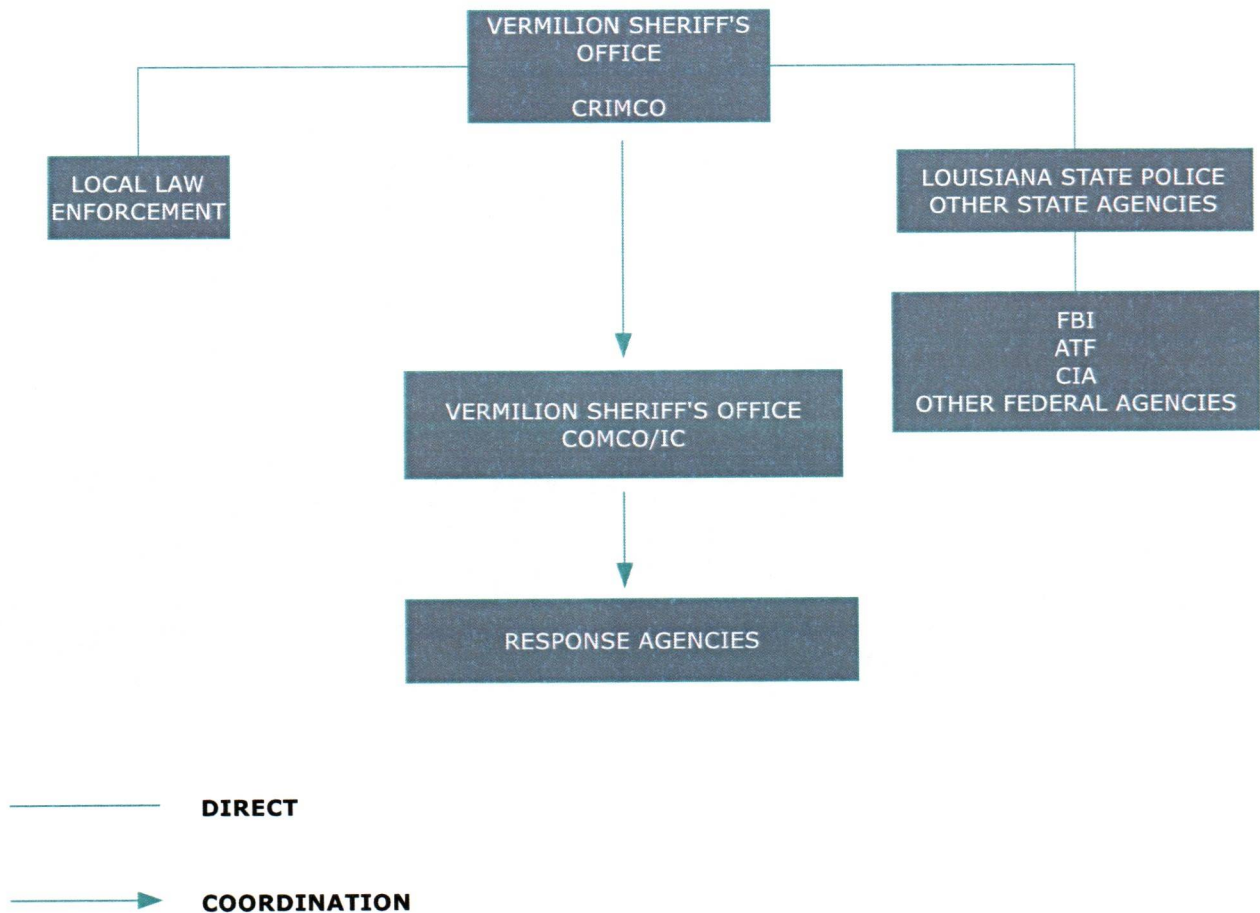
## X. APPENDICIES TO THIS ANNEX

1. CRIMCO Organization Chart
2. COMCO Organizational Chart
3. Incident Flow-Chart
4. Incident Command System Structure
5. THREATCONS

# ANNEX T – APPENDIX 1

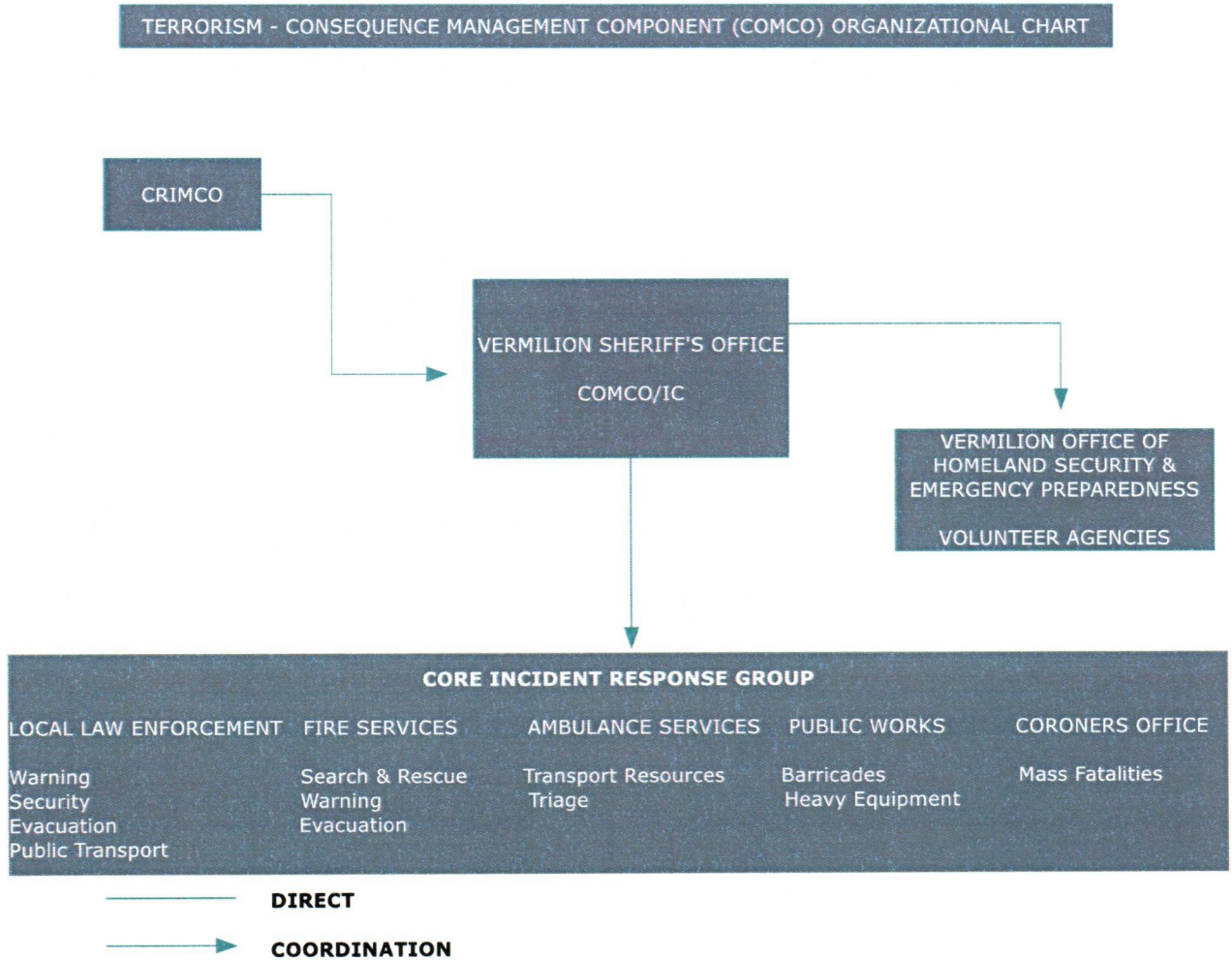
## TERRORISM CRIMCO ORGANIZATIONAL CHART

### TERRORISM - CRISIS MANAGEMENT COMPONENT (CRIMCO) ORGANIZATIONAL CHART



# ANNEX T – APPENDIX 2

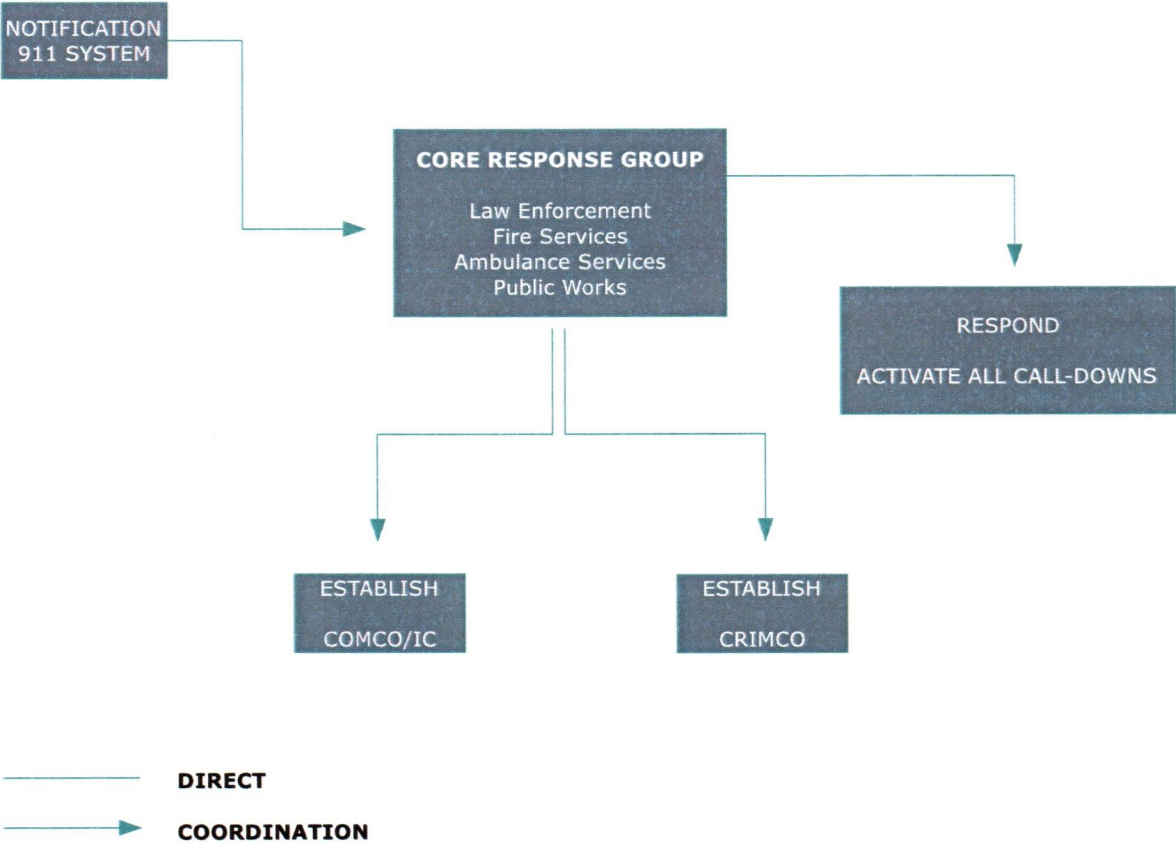
## TERRORISM COMCO ORGANIZATIONAL CHART



ANNEX T – APPENDIX 3

TERRORISM INCIDENT FLOW CHART

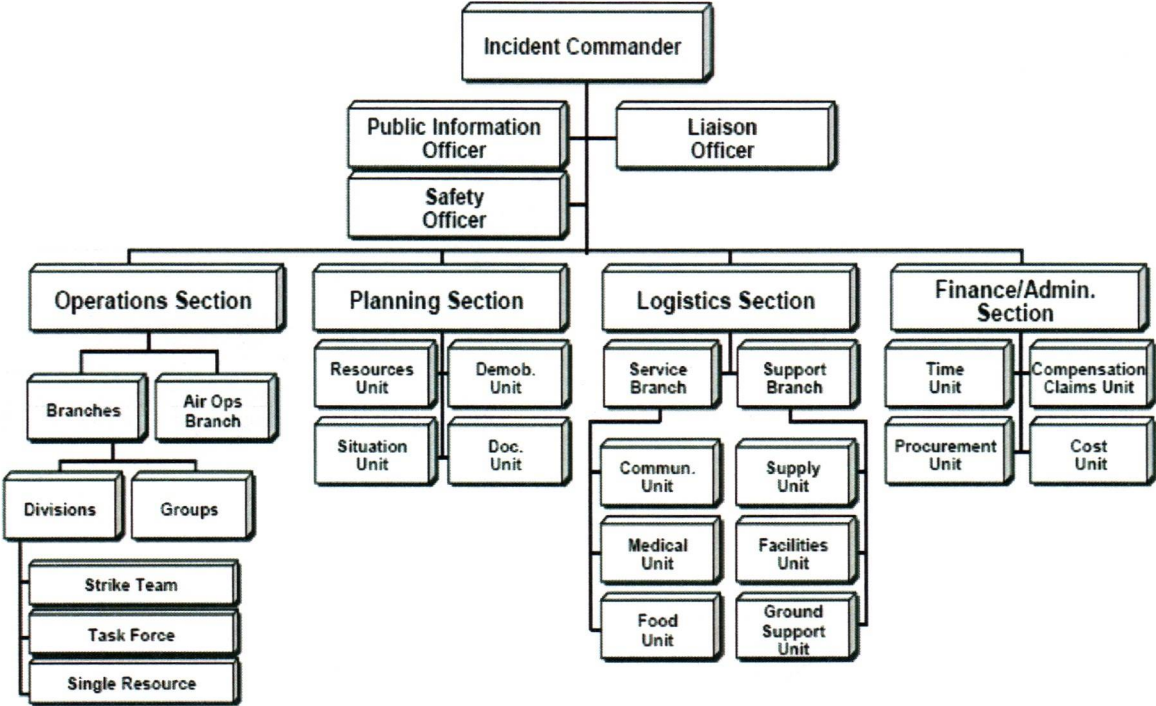
TERRORISM - INCIDENT FLOW ORGANIZATIONAL CHART



ANNEX T – APPENDIX 4

TERRORISM INCIDENT COMMAND ORGANIZATIONAL STRUCTURE CHART

TERRORISM - INCIDENT COMMAND ORGANIZATIONAL STRUCTURE



— DIRECT  
→ COORDINATION

---

# ANNEX T - APPENDIX 5

## THREATCONS

- A. **THREATCON NORMAL** - A general threat of possible terrorist activity exists but warrants only a routine security posture. THREATCON NORMAL is always in affect unless a more specific threat or incident warrants the transition to a higher THREATCON, returning to THREATCON NORMAL upon termination.
- B. **THREATCON ALPHA** – A general threat of possible terrorist activity against personnel and facilities exists, the nature and extent of which are unpredictable. Circumstances do not justify full implementation of THREATCON Bravo measures but certain measures from higher THREATCONS may be necessary based on intelligence reports, or as a deterrent. Installation Commander must be able to maintain this THREATCON indefinitely.
- C. **THREATCON BRAVO** – An increased and more predictable threat of terrorist activity exists. The measures in this THREATCON must be capable of being maintained for weeks without causing undue hardship affecting operations capability or aggravating relations with local authorities.
- D. **THREATCON CHARLIE** – An incident occurs or intelligence is received indicating some form of terrorist action against personnel and facilities are imminent. Implementation of this measure for more than a short period has a high probability to create hardship and affect the peacetime activities of the installation and its personnel.
- E. **THREATCON DELTA** - Implementation applies in the immediate area where a terrorist attack has occurred or when intelligence has been received that a terrorist action against a specific location or person is likely